



H U M D I N G E R E Q U I P M E N T L T D .

CONTRACT MANUFACTURING

All products and manufacturing processes comply with or exceed all recognized certification program including ISO9000, QS9000, Mil Standards and AWS D1.1 welding

Humdinger Equipment Ltd.

3202 Clovis Road

Lubbock, Texas, 40419

P: +1 (806) 771-9944

TF: +1 (888) 999-4909

F: +1 (806) 771-9945

“FULL CIRCLE” CONTRACT MANUFACTURING

Our large and well equipped manufacturing facility in Lubbock, Texas, provides a fully comprehensive and flexible service from where we can undertake both manufacturing contracts to customers own drawings and specifications together with our own full turnkey manufacturing, shop assembly and testing work. Our expertise has been relied upon to deliver a diverse range of manufacturing projects.

With over thirty (30) years of experience with designing, manufacturing, and distributing equipment used in general construction, mining, oil & gas, agriculture, waste processing and landfill operations, our highly experienced team of engineers will provide innovative and cost effective solutions to meet our client's expectations, budget and delivery timelines.

We currently have long-term manufacturing relationships in place with a select number companies ranging from small to Fortune 500.

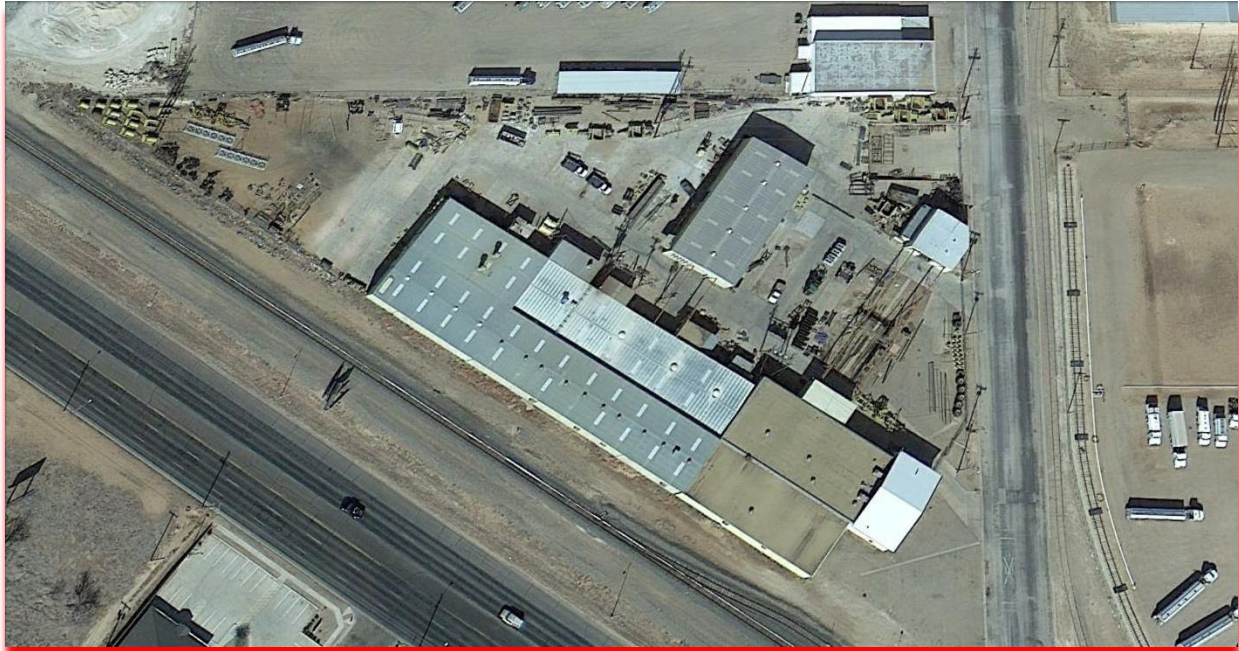
With a large and well-equipped manufacturing facility coupled with a skill base encompassing materials preparation, fabrication, machining, welding, fitting & assembly and surface treatment - ***we can offer a 'one stop shop' for all your contract manufacturing needs, whether that is a one off requirement or a large value contract.***

Few mid-sized companies have a similar range of engineering and manufacturing capabilities. Below is just a sample of the processes we perform every day in our facilities in Lubbock, Texas:

- Design Engineering
- Lean Design for manufacturability
- Sheet metal fabrication
- Steel Fabrication
- CNC Machining
- Torch, Plasma, and Laser Burning
- Sand Blast & Painting
- Plating
- Tool & Die Manufacturing
- Prototype Design and Manufacturing
- 3-D Modeling to Verify Fit & Function
- Final Assembly

If you want a company to manufacture a complete product or a major subassembly, that's where we shine. In fact, we believe nobody can do it better than us; all the way from design to product delivery.

Look at it as a partnership. It is your intellectual property and your product. You are in total control. But we offer ***“Full Circle Manufacturing”***. From beginning to end, we are with you every step of the way. Just consider us an extension of your own shop.



Humdinger's 60,000 square foot manufacturing facility in Lubbock, Texas

What's in it for you?

Below is a sample of the value our current customers experience with Humdinger:

- *Consolidation from many suppliers to one supplier (think of us as 10 or more suppliers)*
- *Improved quality through continuous improvement programs*
- *A better-designed product*
- *Lower total cost*
- *On time delivery*
- *Reduced inventory*
- *Technical expertise at your fingertips*
- *Engineering collaboration*

CAPABILITIES

ENGINEERING

We offer a broad range of engineering design services through our registered professional engineering company.

We utilize the SolidWorks 3-D modeling system as we design products, run FEA feasibility studies, and create our manufacturing product processes.

We provide engineering project work as an independent service or a complete project including engineering design, prototype, testing, and production manufacturing.

These capabilities allow our company to offer the highest level of engineering design combined with a very short concept to market time frame to our customers.

PROTOTYPE MANUFACTURING

A key to success for selling a new product is the prototype manufacturing and testing of the product. Humdinger Equipment, Ltd. is successful at helping companies realize their dreams by building, testing, and modifying prototype products. At the end of the prototype phase we successfully provide a product to the production facility that can be manufactured for success.

TOOLING & FIXTURE DESIGN AND MANUFACTURE

Successful product production includes quality tooling and fixtures. Humdinger Equipment, Ltd. is successful at combining our engineering design and manufacturing capabilities to provide our customers quality tooling and fixtures that provide them with continuous and accurate production of their products.

STEEL FABRICATION

With a factory floor space of approximately 60,000 square feet, our highly experienced fabricators and welders are able to manufacture a wide and complex range of steel fabrications compliant with our customers own designs and drawings or to manufacturing drawings provided by the experienced in-house engineering team at Humdinger Equipment.

Our “full circle” steel manufacturing capability enables us to design, manufacture and supply production of specialist equipment for companies all over the world.

MANUFACTURING CAPABILITIES

Steel Processing

Laser: We utilize the capabilities of six laser machines. Three Cinncinatti lasers with beds of 5x10 feet and 6x12 feet and two Trump 4000 Watt laser provides cutting capabilities to cut up to one (1) inch thick material.

Plasma: We utilize the capabilities of two plasma machines. The bed sizes are 8x20 feet and 8x40 feet providing cutting capabilities to cut up to four (4) inch thick material.

Torch: We utilize the capabilities of one torch burning machine. The bed size is 6x20 feet providing cutting capabilities to cut up to six (6) inch thick material.

Forming Capabilities

We utilize four press brakes that range from six (6) foot to twelve (12) foot beds and up to 600 tons of capacity.

Machining Capabilities

We utilize over 20,000 square feet for machining components. The equipment available to use include four (4) Mazak Q Turn 20, six (6) vertical mills, one (1) Mazak M-4 Turning Center, three (3) CNC lathes, seven (7) engine lathes, seven (7) Bridgeport mills, two (2) drill presses, one (1) radial drill, two (2) surface grinders, one (1) Cylindrical grinder, two (2) 40 ton OBI punch press, one (1) Turrent lathe, two (2) auto band saws, one (1) bolt threader, Coordinate Measuring Machine (CMM), and a Comparator.

Welding & Assembly

We utilize over 60,000 square feet for welding processes. Welders have been certified to the following procedures:

- AWS D1.1
- AWS A5.20 Class E71
- AWS A5.18
- AWS D1.3
- AWS D1.1 Welding Procedure Specification H-FC1-Gr.II (Cold Weather)

We also have the capability and experience welding or inspecting to meet the Magnetic Particle Inspection Material requirements for the following specifications:

- ASTM E-709-01
- ASTM E 1444-05
- MIL-STD-271F(SH)
- MIL-STD-2132D

Blasting & Painting

We have the capability to blast structures up to the size of twenty-five feet wide by fifty feet long and fifteen feet tall. We use a coal slag product that meets all EPA standards and we can apply from a commercial blast up to a near white finish.

We have the capability to apply multiple part coating systems to all product.

Thank you for your interest in Humdinger Equipment Ltd. For more information on our products and services, please contact:

Luke Mason

Manager, Business Development

Humdinger Equipment Ltd.

Email: luke.mason@humdingerequipment.com

Mobile: +1 (604) 773-0173

Skype: luke.mason.skype